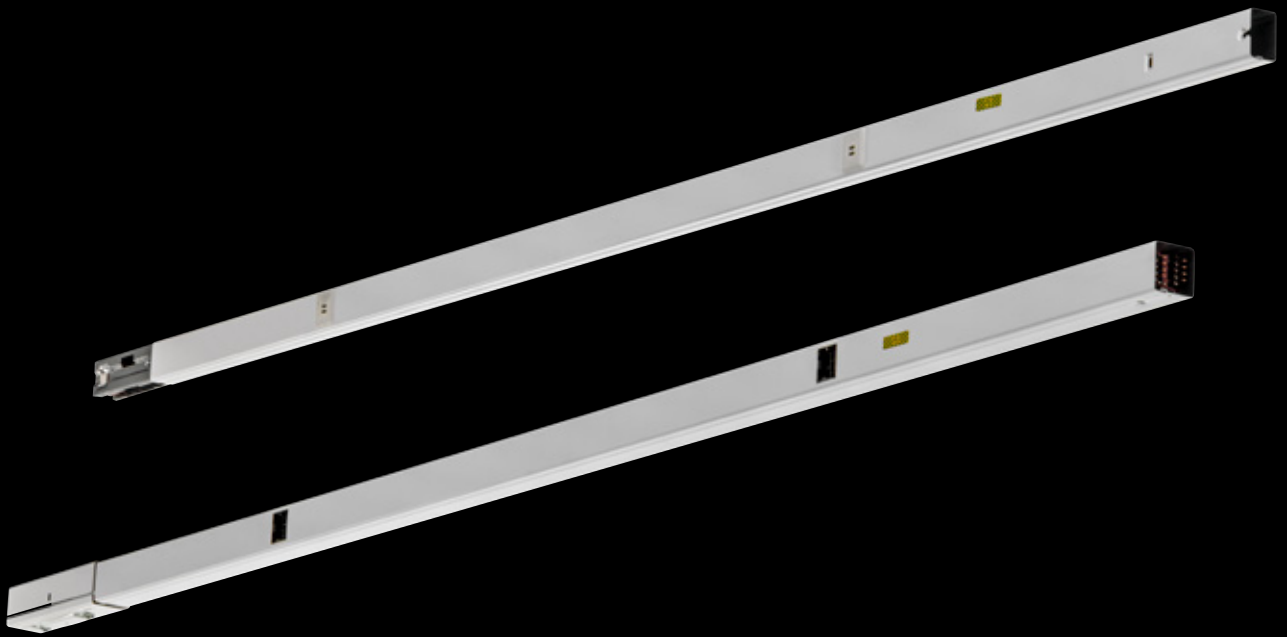


PRACHT®
PRO LINE

LIGHTING TRUNKING LTEC | LTAC



PRO

PRO LINE

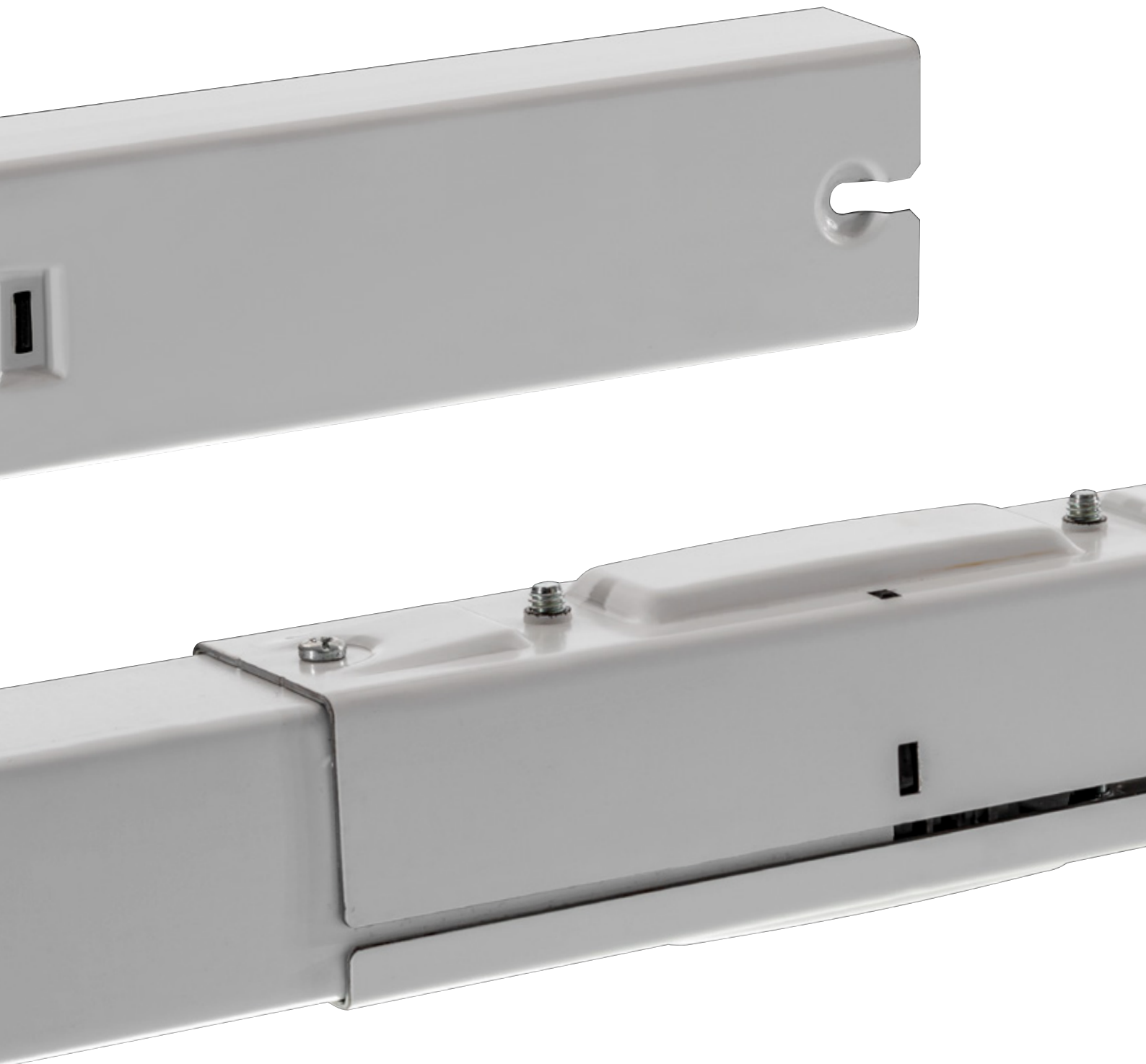
BASIC LINE

CITY LINE

PRACHT®

LTEC

LIGHTING TRUNKING EASY CONNECT



PRACHT®



LTAC

LIGHTING TRUNKING ADVANCED CONNECT

FEATURES

Time is money

Fast installation due to easy connection of the bars.



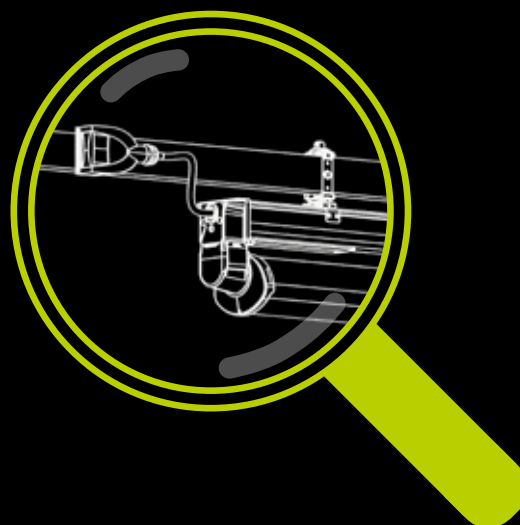
Easy luminaire mounting

It's that easy: mount the rail - fix the luminaires with clamps.



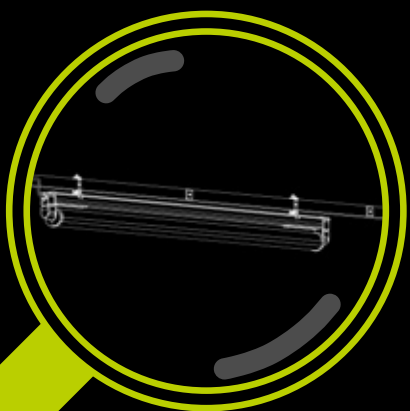
Easy installation

PRO LINE luminaires are equipped with pre-installed connecting cables and adapters - plug and ready.



Modular

Tapping points one meter apart - Luminaires can be set according to the lighting situation.



LTEC | LTAC

IP55 MODULAR SYSTEM
DURABLE EXTENDABLE
FAST INSTALLATION
TOUGH SAFETY FLEXIBLE
LOW MAINTENANCE



HOUSING Stable high rigidity steel sheet track system with integrated cables.

LTEC with 4 conductors + PE, LTAC with 11 conductors + PE.

SEALS Durable seals, IP55 protected.

Meets the requirements of the sprinkler test (90 min).

INSTALLATION Fast mounting with variable mounting points.

FIELDS OF APPLICATION Storage facilities, logistic centers, industrial halls, cold storages, workshops.

TECHNICAL DETAILS For all technical and lighting data about our luminaires please visit pracht.com

5

**YEAR
WARRANTY**



**LONG
LIFETIME**



**FROM -25°C TO +35°C
AT MAXIMUM LOAD**

IP55



**SPRINKLERTEST
PASSED**



LTEC - LIGHTING TRUNKING EASY CONNECT

P/N	Description
9711210	LTEC (Easy Connect) feed unit (left) small 25A with end cover max. 4mm ² , PG 16 d=15mm, 3L+N+PE
9711215	LTEC (Easy Connect) feed unit (left) big max. 10mm ² , PG 21 d=21mm, 3L+N+PE
9711220	LTEC (Easy Connect) feed unit (right) big max. 10mm ² , PG 21 d=21mm, 3L+N+PE
9711130	LTEC (Easy Connect) mounting rail 3L+N+PE - 2m, 25A, mounting distance max. 3m
9711150	LTEC (Easy Connect) mounting rail 3L+N+PE - 3m, 25A, mounting distance max. 3m

LTEC - ACCESSORIES

P/N	Description
9711320	LTEC (Easy Connect) mounting bracket (white) for lighting trunking with steelcord 3m
9711310	LTEC (Easy Connect) universal mounting bracket (white) for luminaires or mounting rail

LTAC - LIGHTING TRUNKING ADVANCED CONNECT

P/N	Description
9712210	LTAC (Advanced Connect) feed unit (left) 25A with end cover PE + control line +2 grids each 3L + N, max. 10mm ² , 2x PG 21 d=21mm
9712220	LTAC (Advanced Connect) feed unit (right) 25A with end cover PE + control line+2 grids each 3L + N, max. 10mm ² , 2x PG 21 d=21mm
9712103	LTAC (Advanced Connect) mounting rail, PE + 2 grids each 3L+N - 2m, 25A, mounting distance max. 5m, 2 + 1 exits, control line single-sided
9712105	LTAC (Advanced Connect) mounting rail, PE + 2 grids each 3L+N - 3m, 25A, mounting distance max. 5m, 3+ 2 exits, control line single-sided

LTAC - ACCESSORIES

P/N	Description
9712320	LTAC (Advanced Connect) mounting bracket (white) for lighting trunking with steelcord 3m
9712310	LTAC (Advanced Connect) universal mounting bracket (white) for luminaires or mounting rail

LTEC | LTAC

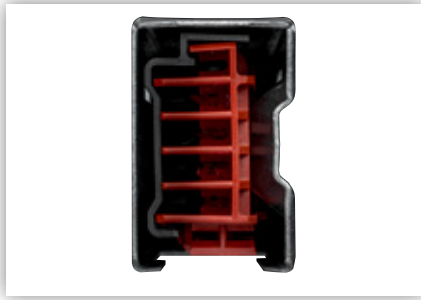
P/N	Description
9713100	LTEC/LTAC output adapter 10 A with variable phase tap for mounting at luminaires Line SO5Z1Z1-F - 3x 1.5 mm ² L+N+PE - 1 m long - open line ends
9713200	LTAC output adapter 16 A with variable phase tap
9713000	Control contact 2-pole for output adapter LTAC (e.g. DALI)

NOTE

PRACHT Service - we prepare the PRO LINE luminaires thus far that the connection cable with adapter and the mounting brackets are delivered pre-assembled. Please add the initials „EC“ or „AC“ to the luminaire P/N for pre-assembled delivery:

- LTEC** Pre-assembly incl. output adapter 10 A and luminaire mounting clamp
- LTAC** Pre-assembly incl. output adapter 10 A and luminaire mounting clamp
- LTAC** Pre-assembly for DALI luminaires incl. output adapter 16 A, and luminaire mounting clamp

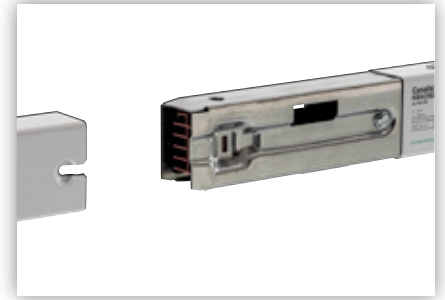
PRACHT®



LTEC



LTEC



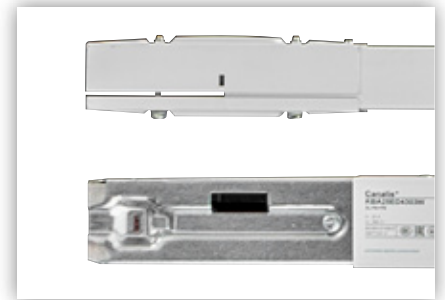
LTEC quick connector



Open tap point



Protected tap point



Feed unit



LTAC



LTAC



LTAC



**FITS WITH ANY
PRACHT LUMINAIRE
THANKS TO THE
MODULAR SYSTEM.**

**"THERE WILL NEVER BE ANY COMPROMISE
IN THE QUALITY OF MY PRACHT LUMINAIRES."**

Alfred Pracht, founder, 1963